

**ixion**<sup>TM</sup>  
Instruments





|                                                  |    |
|--------------------------------------------------|----|
| SAFE CINCH                                       | 5  |
| ALIGNER PLIERS                                   | 6  |
| LINGUAL PLIERS                                   | 8  |
| CUTTERS                                          | 16 |
| UTILITY PLIERS                                   | 22 |
| WIRE BENDING PLIERS                              | 30 |
| HAND INSTRUMENTS AND HEMOSTATS                   | 40 |
| MISCELLANEOUS                                    | 48 |
| LABORATORY PLIERS                                | 50 |
| TRANSPLANTATION STENT KIT                        | 56 |
| WASHING, HANDLING AND STERILISATION INSTRUCTIONS | 57 |
| INDEX                                            | 58 |

The popular choice of premium instruments for orthodontists internationally:

All **Ixion™** instruments are made from German surgical stainless steel with a beautiful **satin finish** which reduces glare from surgery lighting.

All cutting edges are made from **tungsten carbide** or **reminate** providing superior strength and sharpness.

All instruments have a Box Joint which provides a **reliable, smooth action** and ensures the tips align perfectly every time.

All **Ixion™** instruments have a **unique streamline design** providing a perfectly balanced instrument.

All **Ixion™** instruments are finished with **round, smooth edges** providing maximum comfort and safety for you and your patient.



I have been using Ixion pliers for 8 years now, having made the decision to use them when I moved my hospital department over to a CSSD tray system. I based that decision on having been very impressed with the high quality of the instruments when compared with other instruments I have used over a long and busy clinical career.

I set very high standards in clinical matters and Ixion pliers do not disappoint in any way. In the time they have been in use, they have proved to be reliable and robust, and good value for money.

They are well-designed and beautifully engineered from good quality steel, being both aesthetic and functional. If I had to re-stock my department, I would certainly order Ixion pliers again. I would highly recommend them to anyone.



**Helen Taylor**, Consultant Orthodontist, Nevill Hall Hospital, South Wales





## Looking for a solution to reduce emergency appointments?

### Introducing the Safe Cinch...



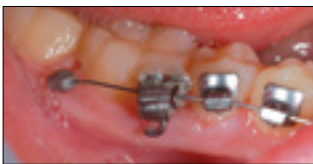
#### **Problem 1: Wire Poke**

The wires slide out distally through the molar tubes or brackets as teeth align or wire slides round. This is specially a problem with SLBs and Lingual technique.



#### **Problem 2: Long Unsupported Span**

The fine, flexible wires drop out of molar tubes and may be too light to be held by conventional cinching.



#### **Problem 3: Loose Tube**

Bonded molar tubes that debond can easily come off the back of the wire even when conventionally cinched, causing safety concerns.



#### **Solution: Safe Cinch**

The Ixion Safe Cinch is a simple solution to prevent any of these problems from occurring.



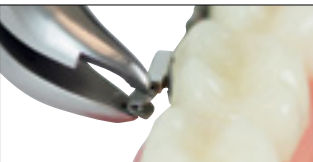
**ix920** Safe Cinch Plier

**ix921** Safe Cinches Pk 40

**ix922** Safe Cinches Plier & 40 Cinches



The Safe Cinch is a rounded, crimpable device which is fitted over the protruding end of the archwire behind the molar tube, using special pliers designed to hold and crimp it securely. The Safe Cinch is designed to reduce emergency appointments by preventing sharp wire from poking into the soft tissue at the back of the mouth, safely holding debonded molar tubes on the archwire, and preventing flexible wires from dropping out of molar tubes or brackets.



The ix920 is a plier used for the positioning of the ix921 Safe Cinch. The Safe Cinch must be positioned using the ix920 Safe Cinch Plier otherwise its safety cannot be assured.

EU patent number: EP 2106246. USA patent number: US 8,246,350 B2.



I have been using safe cinch for some time now and find it invaluable to secure the distal ends of sectional wires. The safe cinch is more comfortable for patients as it eliminates wire pokes which also helps reduce emergency appointments. It's also very useful as stops for low friction systems.



**Dr. Chris Lowe**, Principal Orthodontist, England



## Aligner Pliers

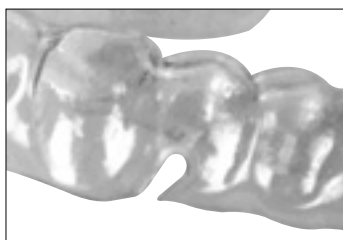
It's clear to see that thermoformed aligner systems are a fast growing area in orthodontics. To meet demand we have designed a range of instruments to aid clinicians in the successful treatment of all cases.

The use of aligner pliers may avoid future refinement stages as they can recover teeth which may have fallen behind in treatment. Featuring our world renowned elegant and streamline Ixion design, these easy to use pliers are perfect for achieving greater torque, rotational control and increased retention.

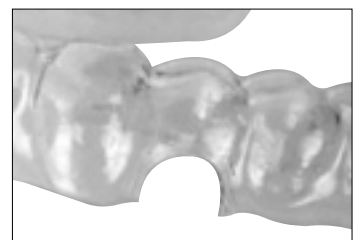
All the finer details are reflected in the design; including narrow tips for greater access into the tricky lower anterior section of aligners, and the easy to use, no-heat-required function.

## Coming Soon...

**ix890**  
The Hook Forming Plier



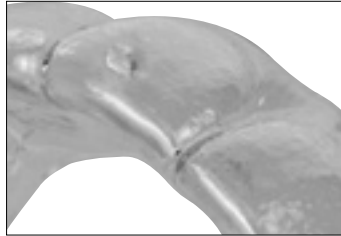
**ix891**  
The Hole Punch Plier





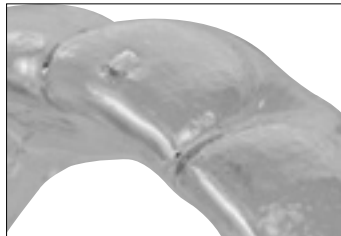
**ix887**  
The Torque Aligner Plier

Due to material flexibility at the gingival margins, achieving torque may be challenging. The IX887 creates a horizontal indentation (0.75 x 1.5mm), creating a force point for individual lingual or labial root torque.



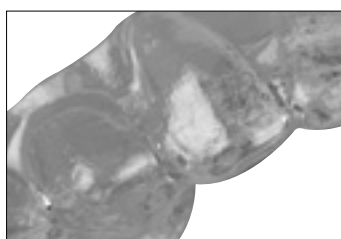
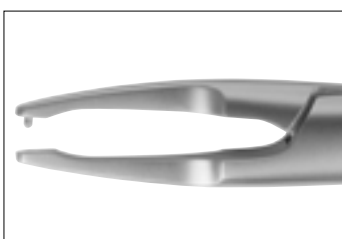
**ix888**  
The Rotation Aligner Plier

Rotational control with aligners can often prove challenging due to the lack of surface contact area between aligner and tooth – particularly on laterals. The IX888 creates a vertical indentation / force point (0.75 x 1.5mm) on the tooth surface to optimise tooth rotation.



**ix889**  
The Retention Aligner Plier

Use the IX889 on the gingival margin at the interdental papilla to create a circular indentation (1mm) for increased retention of aligners and retainers.





## Lingual Series

This range of lingual instruments has been developed specifically to facilitate the 'art' of lingual orthodontics. We consulted many lingual orthodontists in order that we were able to produce a range of instruments which fully met their needs.

The small inter bracket widths and working in parts of the mouth which are hard to reach with traditional orthodontic instruments gives the lingual technique an added difficulty.

With these factors in mind we have developed a range of instruments with longer handles for the difficult to reach areas, the heads of the instruments are smaller to accommodate the lack of space and all instruments have the unique Ixion smooth contours for added patient comfort.

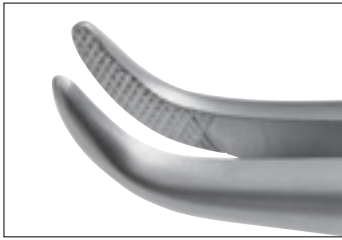






**ix950**  
Weingart 60° Angle

Small serrated tips are angled at 60° for easy access in the posterior region. Maximum .018" (.46mm) wire.



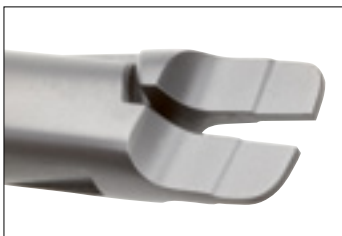
**ix951**  
Weingart 60° Angle with T.C.

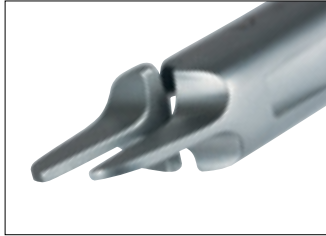
Same features as ix950 with the addition of Tungsten Carbide tips. Maximum .018" (.46mm) wire.



**ix952**  
Stepped Tweed Arch Plier

Designed for torquing and bending both square and rectangular wires. The fine tips allow excellent access even in lower anterior region.





**ix949**  
Slim Tweed Plier

This instrument has slimmer tips - just 0.9mm - than the current ix871 which means that this is ideal for use in the lingual technique.



New Design



**ix953**  
Cinch Back

New and improved Cinch Back  
The lower tip of the plier has been contoured to enable you to place the instrument **closer to the distal end** of the buccal tube. This results in a closer bend and **improved patient comfort**. The serrated tips of this instrument hold the wire securely while bending the wire 90° distal to the buccal tube. For use with Nickel Titanium wires .012" - .018" (.30 x .46mm).



**ix954**  
Cinch Back - Large Wire

Same features as ix953 but designed to work with larger wires.

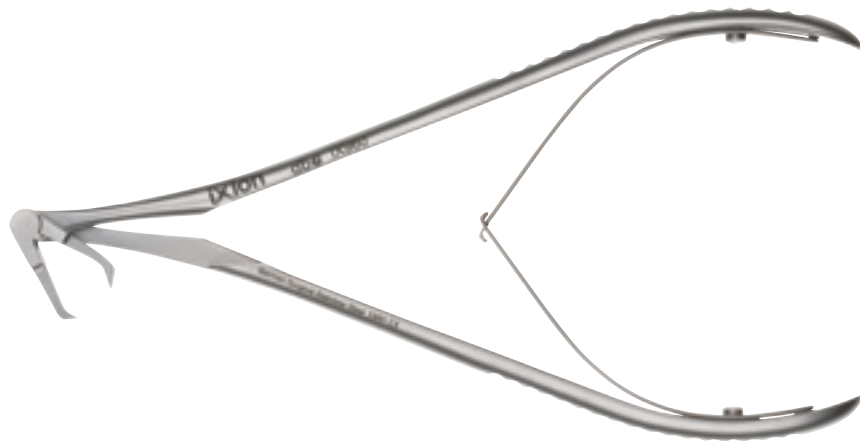
The serrated tips of this instrument hold the wire securely while bending the wire 90° distally to the buccal tube, avoiding patient discomfort.

For use with wires from .016" (.41mm) up to .021" x .025" (.55 x .64mm).



### ix955 Bracket Removing Plier

The narrow sharp tips, wedge between the edges of the bracket base and tooth surface to remove direct bond brackets safely and comfortably.



### ix960 Lingual Anterior Debonding Plier

Specifically designed to enable the clinician to easily debond Lingual Bracket including those with a customised base.

The bracket is successful debonded by placing the sharp edges of the metal arms are placed between the adhesive and enamel interface. The handles are slowly closed so that a peeling action of the bracket base from the gingival towards the incisal completes the safe and successful debond.



The sharp edges of the metal arms are manufactured from a special hardened steel which gives long lasting sharpness.

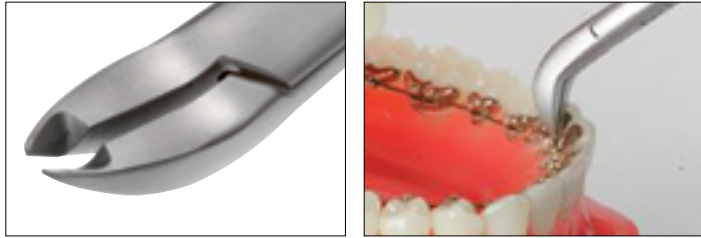


### ix956 Mini Ligature Cutter 50° Angle Upper

The narrow tip is angled at 50° for excellent access to the upper arch. The inserted tips ensure precision cutting of ligature wires and elastics.

Maximum Cutting Capacity:  
soft wire up to .012" (.30mm)





**ix956s**  
Micro Ligature Cutter Upper 50°  
Angle Upper

Same features as ix956 but with shorter handles.

Maximum Cutting Capacity:  
soft wire up to .012" (.30mm)



**ix957**  
Mini Ligature Cutter 60° Angle  
Lower

The narrow tip is angled at 60° for excellent access to the lower arch. The inserted tips ensure precision cutting of ligature wires and elastics.

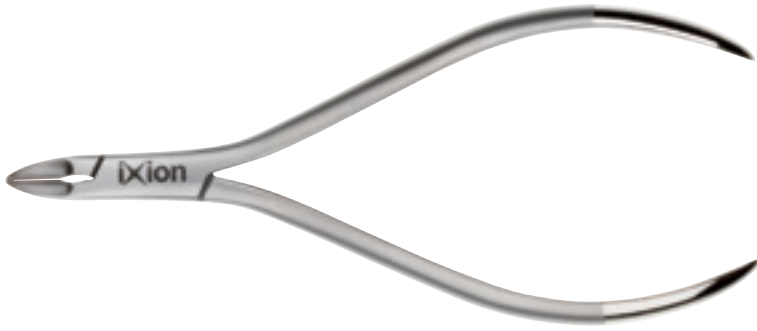
Maximum Cutting Capacity:  
soft wire up to .012" (.30mm)



**ix957s**  
Micro Ligature Cutter 60° Angle  
Lower

Same features as ix957, but with shorter handles.

Maximum Cutting Capacity:  
Soft wire up to .012" (.30mm)



**ix911**  
**Micro Ligature Cutter**

The small, narrow and sharp pointed tips allow easy access to the most difficult areas. The inserted tips ensure precision cutting of ligature wire & elastics.

Maximum Cutting Capacity: soft wire up to .012" (.30mm)

Caution: This delicate instrument is designed for the removal of soft stainless steel ligatures to a maximum of .012" diameter.



**ix911L**  
**Micro Long Handled Ligature Cutter**

Same features as IX911 but with longer handles.

Maximum Cutting Capacity: soft wire up to .012" (.30mm)

Caution: This delicate instrument is designed for the removal of soft stainless steel ligatures to a maximum of .012" diameter.



**ix958 / ix958s**  
**Flush Cut Distal End Cutter**  
**Standard / Small**

The flush cut feature of this instrument allows the archwire to be cut flush to the buccal tube, eliminating the possibility of patient discomfort resulting from archwire protrusion. The Tungsten Carbide inserted tips ensure precision and perfect tip alignment.

Minimum Cutting Capacity:

ix958 - .016" (.41mm),

ix958s .012" (.30mm)

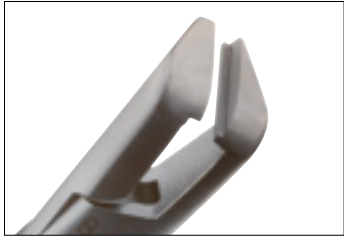
Maximum Cutting Capacity:

ix958 archwires up to .021" x .025"

(.55 x .64mm)

ix958s archwires up to .016" x .025"

(.41 x .64mm)



**ix959**  
Long Handled Distal End Cutter

This instrument features long handles and a slim box joint with a compact head to ensure easy access in hard to reach areas. The T.C. inserts provide unsurpassed performance and durability.

All Ixion distal end cutters feature safety hold.

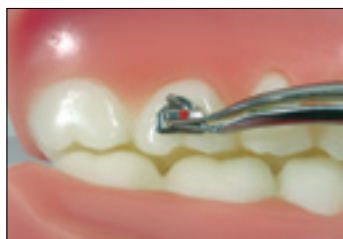
Minimum Cutting Capacity:  
.012" (.30mm)

Maximum Cutting Capacity:  
.018"x.025" (.46 x.64mm)



**ix940**  
Curved Smaha

Fine curved tips but strong enough for inserting archwires and excellent for placing elastomerics to lingual brackets.



**ix632**  
Lingual Bracket and Bondable  
Tube Holder

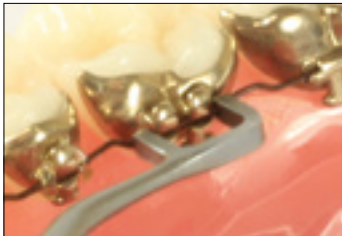
Reverse action Tube placer designed for placing bondable tubes and lingual brackets and attachments. Curved design allows placement with an unobstructed view.



**ix941**  
Curved Lingual Micro Mosquito

Very Fine curved serrated tips and positive locking ensure consistent performance.

Used to place elastic ligatures in difficult to reach areas.



**ix945**  
Lingual Tucker

The tucker has been specially developed through consultation with experienced lingual orthodontists and is especially suited to use with self-ligating lingual brackets systems.

The Ixion Lingual tucker gives optimum visibility and access during use in both the anterior and posterior region due to its unique design.

Designed in conjunction with Peter Baldwin, Warrington.



## Cutters





**ix900**  
Distal End Cutter

This instrument cuts wires close to the buccal tube and safely holds the distal end. The Tungsten Carbide inserts ensure precision cutting, long wear and unsurpassed cutting performance.

All Ixion distal end cutters feature safety hold.

Cutting Capacity:  
archwires up to .021" x .025"  
(.55 x .64mm)



**ix901**  
Long Handled Distal End Cutter

This instrument features long handles and a compact head to ensure easy access in hard to reach areas. It cuts wires close to the buccal tube and safely holds the distal end. The Tungsten Carbide inserts provide unsurpassed performance and long wear.

All Ixion distal end cutters feature safety hold.

Cutting Capacity:  
archwires up to .021" x .025"  
(.55 x .64mm)



Using None Flush Cut Distal End.



Using Flush Cut Distal End.

**ix902 / ix902s**  
Flush Cut Distal End Cutter Standard / Small

The flush cut feature of this instrument allows the archwire to be cut flush and safely held eliminating the possibility of patient discomfort resulting from archwire protrusion.

ix902 Minimum Cutting Capacity:  
.016" (.41mm)

ix902 Maximum Cutting Capacity:  
archwires up to .021" x .025"  
(.55 x .64mm)

ix902s Minimum Cutting Capacity:  
.012" (.30mm)

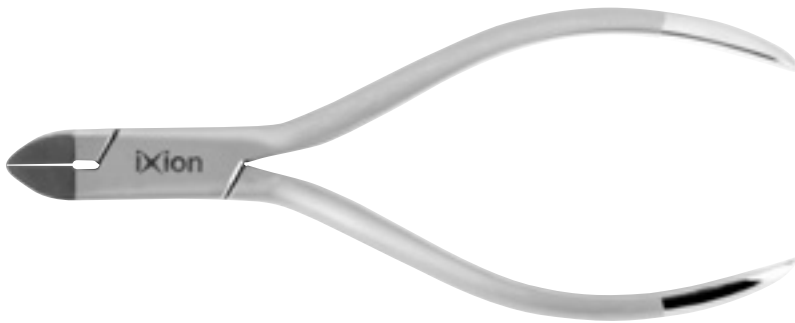
ix902s Maximum Cutting Capacity:  
archwires up to .016" x .025"  
(.41 x .64mm)



**ix905**  
Hard Wire Cutter

Easily cuts any size archwire or pin. The inserted tips ensure precision cutting and perfect tip alignment.

Minimum Cutting Capacity:  
.012" (.30mm)  
Maximum Cutting Capacity:  
archwires up to .021"x .025"  
(.55 x .64mm)



**ix915**  
Hard Wire Cutter with T.C. Inserts

Same design as the popular IX905 with the addition of T.C. inserts for increased durability and ability to cut elastomeric chain.

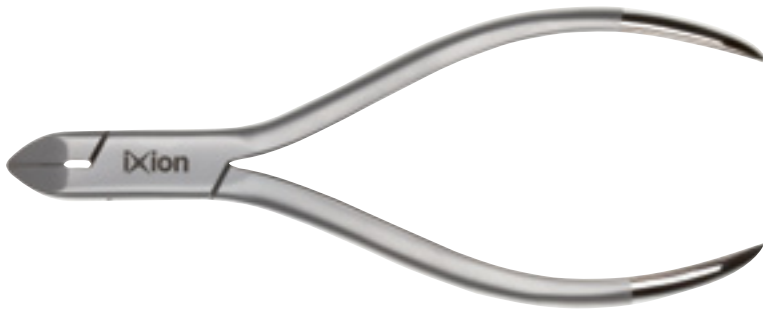
Minimum Cutting Capacity:  
.012" (.30mm)  
Maximum Cutting Capacity:  
archwires up to .021"x .025"  
(.55 x .64mm)



**ix906**  
Hard Wire Cutter 15° Angle

Same features as standard hard wire cutter ix905 with the advantage of 15° angle for easier access to the posterior area.

Minimum Cutting Capacity:  
.012" (.30mm)  
Maximum Cutting Capacity:  
archwires up to .021"x .025"  
(.55 x .64mm)



**ix916**  
Hard Wire Cutter 15° Angle  
with T.C. Inserts

Same design as the popular IX906 with the addition of T.C. inserts for increased durability and ability to cut elastomeric chain.

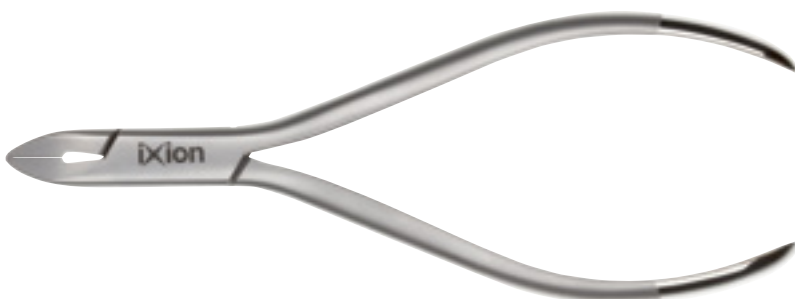
Minimum Cutting Capacity:  
.012" (.30mm)  
Maximum Cutting Capacity:  
archwires up to .021"x .025"  
(.55 x .64mm)



**ix908**  
Heavy Duty Hard Wire Cutter

This instrument cuts up to 1.5mm wire with ease due to its triple action design. Inserted tips ensure precision cutting and perfect tip alignment.

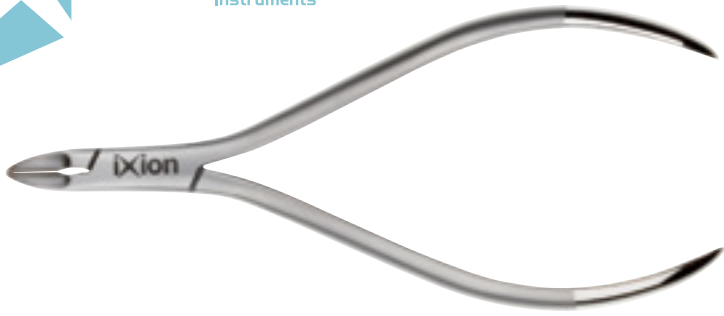
Minimum Cutting Capacity:  
.014" (.36mm)  
Maximum Cutting Capacity:  
wire up to .060" (1.5mm)



**ix910**  
Pin Ligature Cutter 7° Angle

Pin ligature cutter with 7° angled tips to allow easy access and better visibility in difficult to reach areas. Inserted tips ensure precision cutting of ligature wire, pins and elastics.

Maximum Cutting Capacity:  
soft wire up to .016" (.41mm)



**ix911**  
Micro Ligature Cutter

The small narrow and sharp pointed tips allow easy access to the most difficult to reach areas. The inserted tips ensure precision cutting of ligature wire and elastics.

Maximum Cutting Capacity:  
soft wire up to .012" (.30mm)

Caution: This delicate instrument is designed for the removal of soft stainless steel ligatures to a maximum of .012" diameter.



**ix911L**  
Micro Long Handled Ligature Cutter

Same features as ix911 but with longer handles.

Maximum Cutting Capacity:  
soft wire up to .012" (.30mm)

Caution: This delicate instrument is designed for the removal of soft stainless steel ligatures to a maximum of .012" diameter.



**ix912**  
Standard Ligature Cutter

This cutter has fine tips for easier access to difficult to reach areas. Cuts of pins, wire ligatures and elastics.

Maximum Cutting Capacity:  
soft wire up to .015" (.38mm)



### ix913 Standard Soft Wire Ligature Cutter

Same design as ix912 but without inserts.

Maximum Cutting Capacity:  
soft wire up to .012" (.30mm)



I have used Ixion orthodontic instruments for approximately six years now. Without question, they offer unparalleled quality compared to all other orthodontic instruments on the market today. The workmanship that goes into every instrument is outstanding and is guaranteed for five years!

A reliable, smooth closing action is produced as each instrument incorporates a box joint that ensures the tips align perfectly without any rocking. Along with the elegant rounded finish, this makes using Ixion instruments a pleasurable and comfortable experience – for both patient and orthodontist.

When it comes to choosing your orthodontic instruments, there can only be one choice – Ixion.



**Richard Needham**, Consultant Orthodontist, Manchester Dental Hospital

# Utility Pliers





**ix800**  
Small Weingart

The special features incorporated in this ixion Weingart make this one of the most popular. Matching serrated tips hold wires firmly at a convenient working angle. Carefully tapered beaks fit easily between brackets and are rounded for safety and comfort.

Holds round, square and rectangular wires up to .022" x .028" (.56 x .71mm)



**ix801**  
Small Weingart with T.C.

Same design as ix800 but with inserted tips providing maximum wire control and prevents the wire from slipping.

Holds round, square and rectangular wires up to: .022"x .028" (.56 x .71mm).



**ix802**  
Large Weingart

Precision serrated tips are designed to hold heavy wires and prevent the wire from slipping, for the safe and easy insertion or removal of all arches.

Holds wire up to .030" (.076mm).



**ix803**  
Large Weingart with T.C.

Same as ix802 with inserted tips providing maximum wire control and to prevent the wire from slipping.

Holds wire up to .030" (.076mm).



**ix804**  
Fine Tipped Weingart

This strong but fine tipped utility plier allows excellent access in difficult to reach areas.

Holds wire up to .022" x .028" (.56 x .71mm).



**ix843**  
Utility Weingart with Inserted Tips

This new Weingart plier is already proving popular. Designed for use with larger wires but slim enough to allow the clinician good visibility in difficult to reach areas. Elegant and perfectly balanced with beautifully rounded tips for patient comfort. Precision serrated tips prevent the wire from slipping.

Holds wire up to .022"x .028" (.56mm x .71mm).

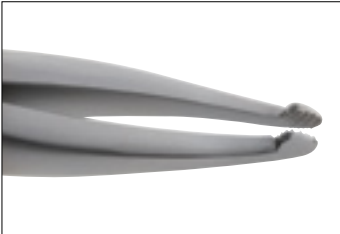




**ix805**  
How Plier (Straight)

A versatile utility plier with a long tapered tips. The 3/32" diameter tips are serrated to prevent wire slippage.

Holds wire up to .022" x .028" (.56 x .71mm).



**ix806**  
How Plier (Angled)

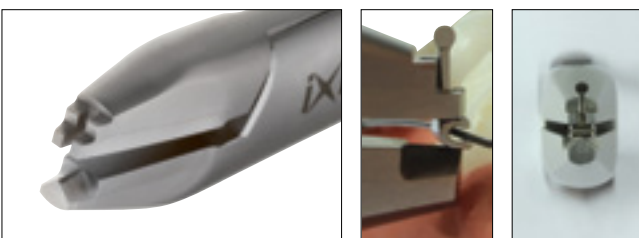
Similar to ix805 but with 45° angled tips for convenient access to lingual and other difficult to reach areas. Matching serrated tips hold wires firmly at a convenient working angle.

Holds wire up to .022" x .028" (.56 x .71mm).



**ix820**  
Crimpable Archwire Hook Plier

Designed for surgical ball hooks and auxiliaries. The slotted tip holds auxiliaries secure to provide for positive crimping.





**ix834**  
Crimping Plier

For applying crimpable stops to archwires.



**ix825**  
Posterior Band Remover (Short)

The plastic tip rests on the occlusal surface of the molar which places the removing tip in the perfect position to catch the gingival edge of the band. Replacement pads are available in 3/16" and 1/8" diameters.

Replacement Tips 3/16"  
(5mm) - IX895S  
Replacement Tips 1/8"  
(4mm) - IX896S



**ix826**  
Posterior Band Remover (Long)

Same features as ix825 but with a longer band removing arm.

Replacement Tips 3/16"  
(5mm) - IX895S  
Replacement Tips 1/8"  
(4mm) - IX896S



**ix838**  
Posterior Band Remover Plier

A long arm band remover with a push fit pad.

Replacement Tips  
Pack of 10.



**ix827**  
Direct Bond Remover (Straight)

Force is applied to the bracket-tooth interface. The tips are positioned mesially-distally or at the occlusal gingival interface to remove direct bond brackets safely and comfortably.



**ix828**  
Direct Bond Remover (Angled)

Same design as ix827 except the 60° angle allows easier access in difficult to reach posterior brackets.





**ix829**  
Direct Bond Remover

Removes brackets easily by holding the side of the bracket in a horizontal position or under the tie wing and applying pressure by torquing or turning in a clockwise motion. The inserted tip provide longevity.



**ix835**  
Adhesive Removing Plier

The Vinyl tube rests on the occlusal / incisal surface of the tooth ensuring no discomfort to the patient while the sharp metal tip removes adhesive from the labial / buccal surface with ease.

Replacement Metal Pad - ix836 -  
Sold in packs of 2.

Replacement Vinyl Tube  
15cm - ix837



**ix840**  
Small Adams Plier

Inserted hardened tips provide excellent resistance to wear. Square beak 1mm at tip and parallel at .045" opening.

Effective for wires up to  
.030" (.76mm).



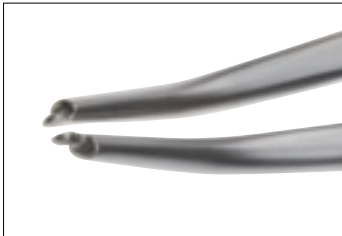
**ix824**  
Coon Ligature Tying Plier

Self-locking ligature tying plier with fine beaks for the ease of applying and tying Stainless Steel ligatures.



**ix841**  
Force Module Separator

Designed for easy placement of separating elastics. Modules will not slip because of the undercut of the tips.



**ix895S**  
Replacement Tips 3/16" (5mm)  
for ix825/826  
Pk 3



**ix896S**  
Replacement Tips 1/8" (4mm)  
for ix825/826  
Pk 3



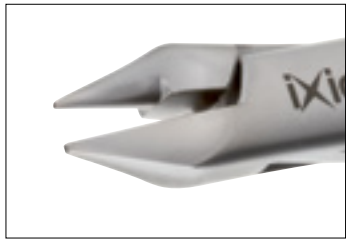
**ix836**  
Replacement Metal Pad  
for ix835  
Pk 2



**ix837**  
Replacement Vinyl (150mm)  
for ix835



Wire Bending Pliers



**ix807**  
Light Wire Plier

This popular design features inserted tips which provide excellent grip and durability.

Tips bend archwires from .012" to .020" (.30mm - .51mm).



**ix808**  
Light Wire Plier with Cutter and 2 Grooves

Same popular design as ix807 but with cutter and grooves. Beaks are grooved for round wire at 1mm and 2mm from tip.

Tips bend archwires from .012" to .020" (.30mm - .51mm).

Cutter at the base of beaks cuts archwires from .014" to .020" (.36mm - .51mm).



**ix809**  
Light Wire Plier with Cutter

This popular loop forming and bending plier has inserted tips that provide excellent wear.

Tips bend archwires from .012" to .020" (.30mm - .51mm).

Cutter at the base of beaks cuts archwires from .014" to .020" (.36mm - .51mm).



**ix810**  
Bird Beak Plier

The most popular and versatile plier for working with round wire up to .028" (.71mm). The round beak is precision manufactured to a perfect cone - .025" at the tip. The pyramid beak is exactly .025" wide at the tip.



**ix872**  
Bird Beak Plier

Same design as ix810 with the addition of tungsten carbide tips providing maximum wire control and excellent wear.



**ix812**  
Tweed Loop Forming Plier  
with Cutter

Ideal for making consistent uniform loops. The tip has three sections of 1.2mm, 1.8mm and 2.0mm with roughened finish to prevent wire slippage.

For use with round and square wire up to .021 x .025" (.55 x .64mm).

The built in cutter allows wire to be cut from .014" to .020" (.36mm - .51mm).





**ix821**  
Long Beak Light Wire Plier

Longer beaks than the ix810 for making precision loops in light wires. For use with round and square wire up to .020" (.51mm).



**ix814**  
O'Brien Loop Forming Plier

The perfect plier for making Bull, Omega and Closing loops.

For use with used with round & square wire up to .021 x .025" (.55 x .64mm).



**ix815**  
Nance Plier

Precision loop forming with four step tips 3mm, 4mm, 5mm and 6mm. All working edges have been beveled to prevent wire scoring.

Excellent for round and square wires up to .022" (.56mm).



**ix813**  
Tweed Arch Forming Plier

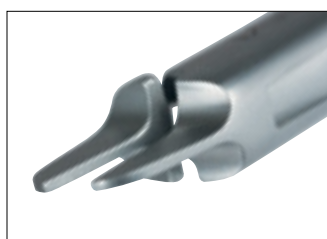
Designed for torquing and bending square or rectangular wires. The blades are designed to be parallel at .020" opening.

For use with wires up to .021" x .025" (.55 x .64mm).



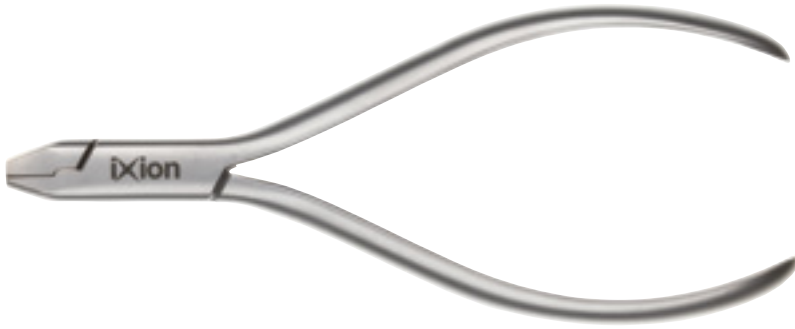
**ix871**  
Tweed Arch Forming Plier

Same design as ix813 with the addition of inserted tips providing maximum wire control and improved gripping.



**ix949**  
Slim Tweed Plier

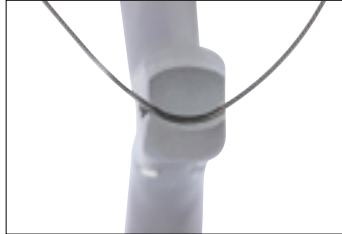
This instrument has slimmer tips - just 0.9mm - than the current ix871 which means that this is ideal for use in the lingual technique.



**ix817**  
De La Rosa

Precision matched concave and convex tips for smooth contouring of light wire loops. Contours and forms arches without torquing.

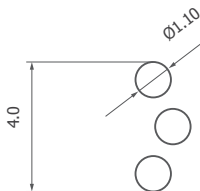
For use with wires up to .021" x .025" (.55mm x .64mm).



**ix816**  
3-Jaw Plier

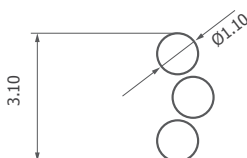
Precision aligned tips are gently rounded for consistent contouring and bending without damaging the archwire. One-piece construction of the double tip ensures superior strength.

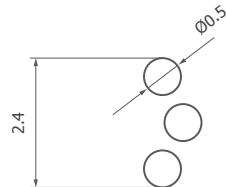
For use with wire up to .030" (.76mm).



**ix819**  
Small 3-Jaw Plier

Same design as ix816 but with slightly smaller tips for working with wire up to .020" (.51mm).

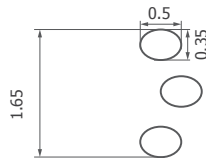
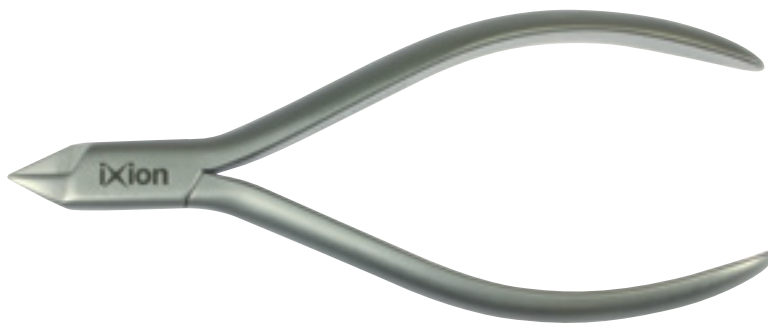




**ix823**  
Fine 3-Jaw Plier

The fine tips allow intra oral bending of the archwire.

Can be used on Nickel Titanium and Stainless Steel wire up to 0.20" (.50mm).



**ix823XF**  
Extra Fine 3-Jaw NiTi Plier

The narrow extra fine tips allow intra oral bending of the archwire between the brackets.

Can be used on Nickel Titanium wire up to 0.14" (.35mm).



**ix873**  
Torquing Plier Set

The torquing plier set allows the accurate addition of torque to square/rectangular archwires. Both Male and Female parts have hard wearing inserted tips.





**ix811**  
Light Wire Contouring & Cutting Plier

Longer, more gradually tapered beaks than the ix809, make it easier to bend small diameter loops.

The precision tips enable contouring of loops and arches up to .021" x .025" (.55 x .64mm) and the built in cutter that allows wires to be cut from .014" to .020" (.36mm - .51mm).



**ix832**  
V Bend Plier

Creates a 1mm V bend in any part of the archwire to stop archwire movement. Inserted tip provides longevity.

For use with NiTi wires up to .018" (.46mm).



**ix830**  
Hollow Chop

Convex/Concave tips enable adjustment of all types of loops.



The European community design number 002455881.  
US patent numbers: US D741,486 S and US D740,942 S.



**ix975**  
Intra Oral Detailing Plier 0.75mm Step

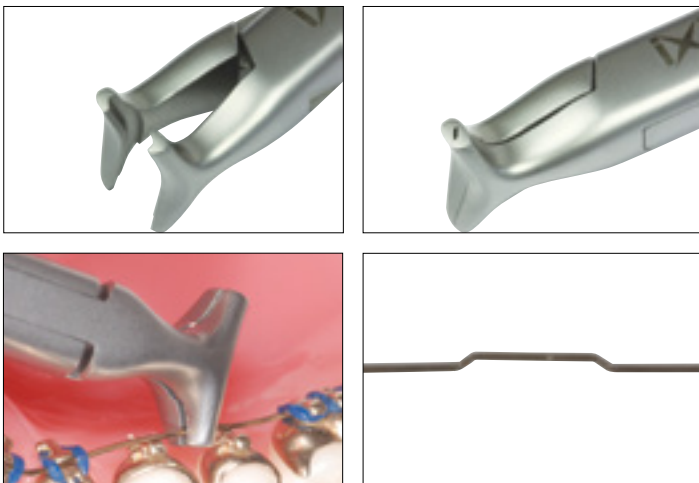
The new Intra-Oral detailing plier from Ixion™; the IX975 allows .029" (.75mm) first and second order bends to be created intra-orally, quickly and accurately without the need for removing the archwire.

The double-sided head of the instrument has been specially designed to enable intra-oral steps to be created, even interproximally between lingual brackets where the space is often very limited.

For use up to max .018" x .018" (0.46 x 0.46mm) wire.



European community design number: 002455881.  
US patent numbers: US D741,486 S and US D740,942 S.



**ix976**  
Intra Oral Detailing Plier 0.5mm Step

Same features as the ix975 but with a smaller head, designed to create .020" (.5mm) first and second order bends intra orally.

The double-sided head of the instrument has been specially designed to enable intra-oral steps to be created, even interproximally between lingual brackets where the space is very limited. For use up to max .018" x .018" wire (.46mm x .46mm).



The IX976 is very nicely designed and manufactured. Compared to the IX975 the step is a bit smaller, it is very precise and completely parallel.



**Prof. Dietmar Segner**, Specialist in Orthodontics, Germany



### ix953 Cinch Back

New and improved Cinch Back The lower tip of the plier has been contoured to enable you to place the instrument **closer to the distal end** of the buccal tube. This results in a closer bend and **improved patient comfort**. The serrated tips of this instrument hold the wire securely while bending the wire 90° distal to the buccal tube. For use with Nickel Titanium wires .012" - .018" (.30 x .46mm).



The IX953 cinch back plier is a plier that I could not practice without. I have not found a better cinch back plier. The small head and light serrations make bending .012 to .018 wires simple and accurate in very tight spaces. I would recommend it to anyone whether you do labial or lingual braces.



**Dr. Jared Gill**, Cornforth-Gill Orthodontics, Fargo, ND



### ix954 Cinch Back - Large Wire

Same features as ix953 but designed to work with larger wires.

The serrated tips of this instrument hold the wire securely while bending the wire 90° distally to the buccal tube, avoiding patient discomfort.

For use with wires from .016" (.41mm) up to .021" x .025" (.55 x .64mm).





## Hand Instruments & Hemostats





**ix650**  
Probe Single Ended



**ix651**  
Probe Double Ended



**ix652**  
Ligature Tucker



**ix653**  
Mitchell Trimmer



**ix656**  
Cement Spatula



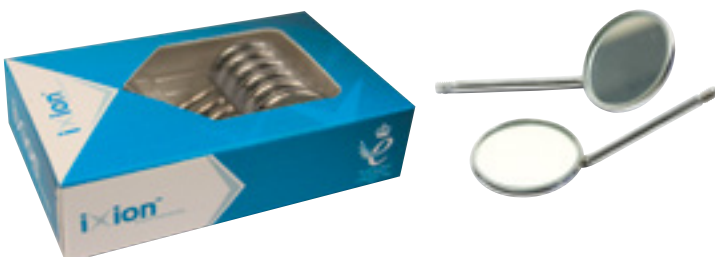
**ix657**  
Flat Plastic

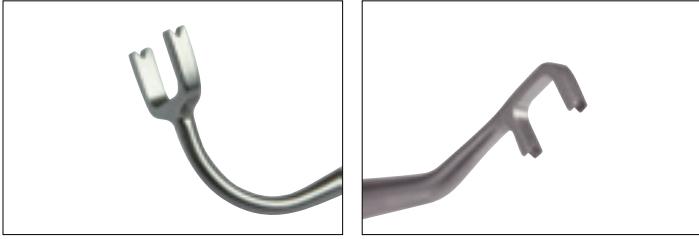


**ix654**  
Mirror Handle



**ix655**  
Mirror Heads  
Pk 12

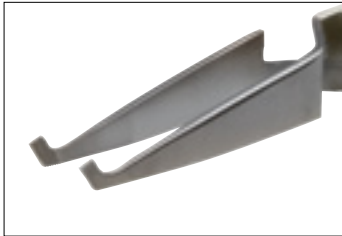




**ix945**  
Lingual Tucker

The Ixion Lingual tucker has been specially developed through consultation with experienced lingual orthodontists and is especially suited to use with self-ligating lingual brackets systems.

The Ixion Lingual tucker gives optimum visibility and access during use in both the anterior and posterior region due to its unique design.



**ix850**  
Direct Bond Bracket Holder

Spring loaded reverse action holds brackets until release is desired. Positioning blade helps with final bracket slot alignment.



**ix630**  
Direct Bond Holder with Positioning Blade

Spring loaded reverse action holds brackets until release is desired. Positioning blade helps with final bracket slot alignment.



**ix631**  
Deluxe Direct Bond Holder

The Same high quality finish as IX850, with the addition of fine tips for easy placement of brackets and attachments. Positioning blade helps with bracket slot alignment.



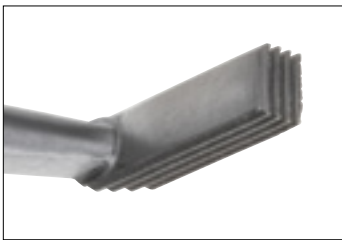
**ix632**  
Lingual Bracket and Bondable  
Tube Placer

Reverse action Tube placer designed for placing bondable tubes and lingual brackets and attachments. Curved design allows placement with an unobstructed view.



**ix633**  
Curved Bracket Holder

Designed for placement of Lingual brackets and attachments. Serrated tips give excellent grip.



**ix845**  
Mershon Band Pusher

Stainless steel serrated tip for positive control.



**ix846**  
Mershon Band Pusher with Small  
Round Handle

The same tip as ix845, but with lower profile handle.



**ix861**  
Mathieu Needle Holder with T.C.

Sturdy, rounded tips designed for twisting ligature wire. Tungsten Carbide tips ensure durability.



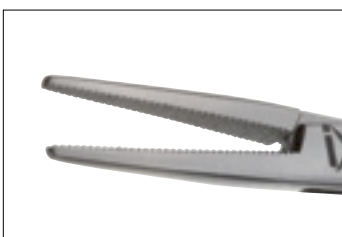
**ix862**  
Mathieu Needle Holder

Sturdy, rounded tips designed for twisting ligature wire.



**ix863**  
Smaha (Straight)

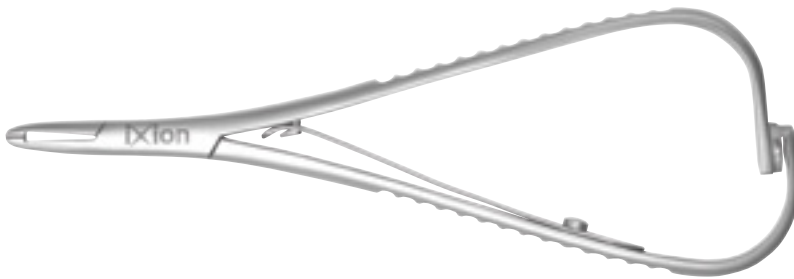
Fine tips excellent for placing elastomeric ligatures.





**ix864**  
Curved Mathieu Needle Holder  
with T.C.

Sturdy rounded tips designed for twisting ligature wire. Curved Tungsten Carbide tip provides easy access in difficult to reach areas and durability.



**ix860**  
Fine Tip Mathieu Needle Holder

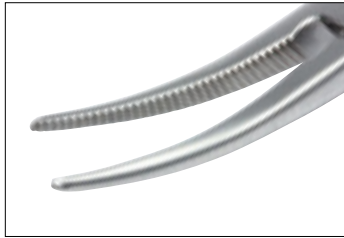
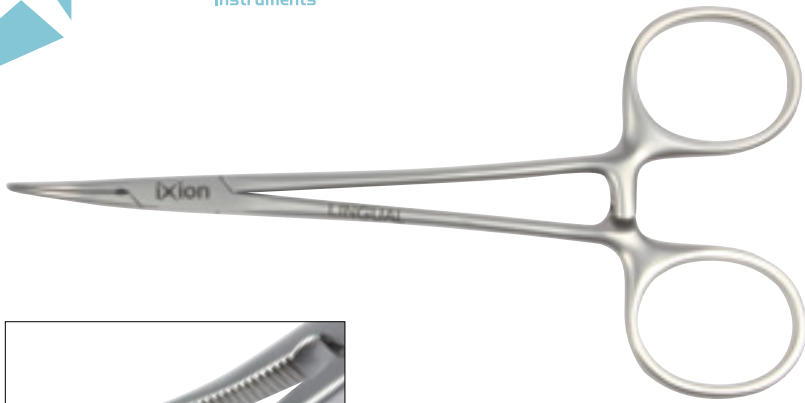
Finer tips than the ix861.



**ix940**  
Curved Smaha

Fine curved tips but strong enough for inserting archwires and excellent for placing elastomerics to lingual brackets.

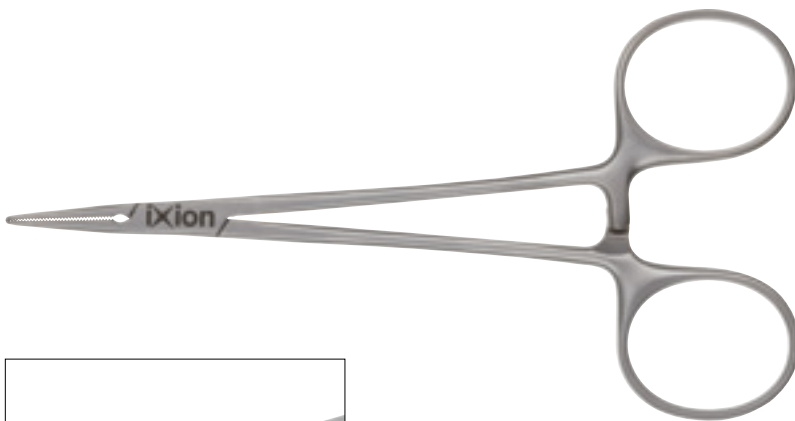




**ix941**  
Curved Lingual Micro Mosquito

Very Fine curved serrated tips and positive locking ensure consistent performance.

Used to place elastic ligatures in difficult to reach areas.



**ix855**  
Mosquito Forceps

Ixion Mosquito Forceps have fine serrated tips.



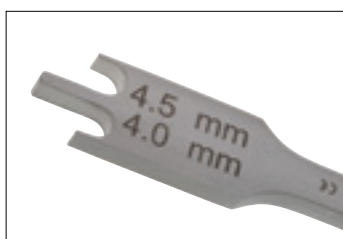
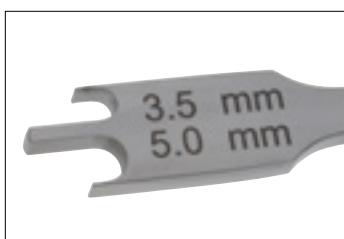
**ix866**  
Bracket Height Gauge

3.5mm-5mm .018  
For precise bracket positioning of .018 brackets.



**ix867**  
Bracket Height Gauge

3.5mm-5mm .022  
For precise bracket positioning of .022 brackets.





### ix870 Serrated Scissors

Serrated tips are ideal for cutting stainless steel tape, bands and ligatures.



### Instrument Code Rings

Designed to fit orthodontic plier handles, scalars, band seaters, hemostats and other orthodontic instruments. Made out of high temperature silicone that can withstand repeated autoclaving and heat sterilisation. Available in packs of 100.

|               |       |        |       |       |       |           |       |
|---------------|-------|--------|-------|-------|-------|-----------|-------|
| Blue          | ix110 | Red    | ix113 | Pink  | ix116 | Yellow    | ix119 |
| Green         | ix111 | Black  | ix114 | White | ix117 | Brown     | ix120 |
| Purple        | ix112 | Orange | ix115 | Tan   | ix118 | Dark Grey | ix121 |
| Mixed Colours | ix122 |        |       |       |       |           |       |







**ix101**  
Small Rack

Autoclavable Stainless Steel Rack



**ix103**  
Large Rack

Autoclavable Stainless Steel Rack



**ix102**  
Medium Rack

Autoclavable Stainless Steel Rack



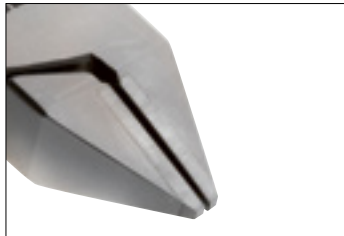
**DB04-0000/1**  
Clear Upright Instrument Rack

Keep your instruments organised will hold up to 15 instruments.



# Laboratory Pliers





**ix164**  
Adams Plier

Inserted tips have a high resistance to deformation or wear under consistent use, providing continued accuracy and precision during appliance construction.

Bends hard wire up to .039" (1.00mm) max.



**ix165**  
Spring Former Plier

Tungsten Carbide inserted tips. Perfectly machined to produce accurate coil springs.

Bends hard wire up to 0.28" (0.7mm) max.



**ix700**  
Universal General Use Plier

Both Tips are serrated. Bends hard-wire up to .039" (1.0mm) max. Cuts hardwire up to .028" (0.7mm) max.



**ix701**  
Three Jaw Plier

Can be used to bend the arms of rapid expansion screws.

For hard wire up to 0.59" (1.5mm) max.



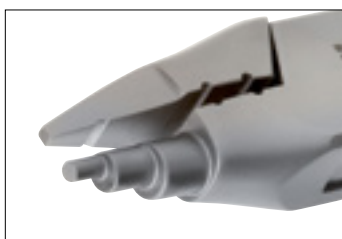
**ix702**  
Three Jaw Plier

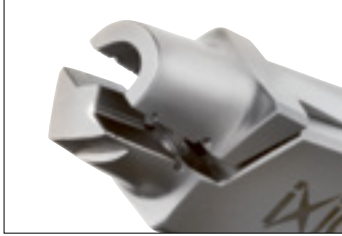
For hard wire up to .024" (1mm) max.



**ix703**  
Young Plier

For labial arches and canine loops.  
For hard wire up to .028" (0.7mm) max.





**ix704**  
Swartz Plier

Arrow clasp forming plier. For hard wire up to .028" (0.7mm. ) max.



**ix705**  
Lingual Arch Bending Plier

Grooved to hold all larger wire sizes, jaw width is .120" (3.05mm). Also ideal for double and triple back bends.

Bends round, square and rectangular wires up to .036" (0.91mm) max.



**ix706**  
Flat Nose Plier

Both Tips serrated. For use with wire up to .036" (0.9mm) max.



**ix707**  
Conical Flat Nose Plier

Has one serrated and one smooth tip.  
For use with wire up to .028"  
(0.7mm.) max.



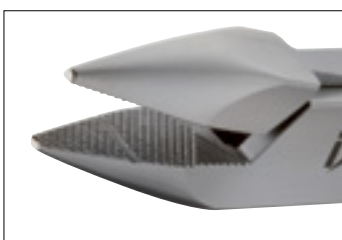
**ix708**  
Optical Plier

For hardwire up to .028"  
(0.7mm) max.



**ix710**  
Flat Nose Plier

A favourite general purpose plier -  
both tips of this flat nose plier are  
serrated with a guiding groove for use  
by the technician or clinician for  
chairside adjustments of wire  
up to .028" (0.7mm).





**ix711**  
Heavy Duty Bird Beak

This plier is ideal for the fabrication of labial and lingual arches, quad helix, and many other appliances.

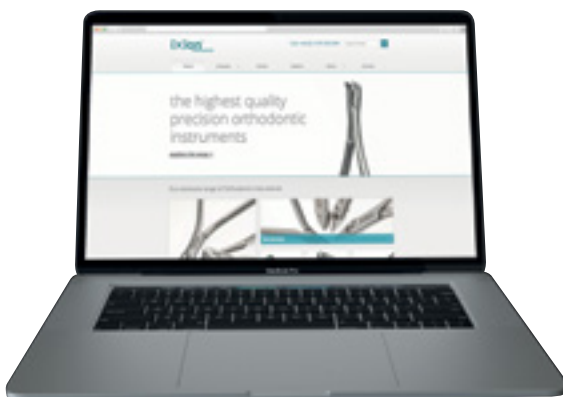
This heavy duty bird beak plier has special inserted tips which allows the bending of wire up to .040" 1mm.



**ix712**  
Heavy Duty Hard Wire Cutter

This plier is ideal for cutting labial and lingual arches, quad helix, and many other appliances.

Double spring design allows for easy cutting of hard wire up to .060" (1.5mm).



Visit our website

[www.ixion-instruments.com](http://www.ixion-instruments.com)

# Tooth Autotransplantation

## ix200

### Transplantation Stent Kit

Tooth autotransplantation is the surgical movement of a donor tooth to a recipient site within the same individual. Autotransplantation is essentially a controlled avulsion and replantation, either into an extraction site or a surgically-prepared artificial socket.

Premolar transplantation is a well-recognised technique for managing missing anterior teeth, including teeth lost through trauma or developmentally absent teeth, such as in hypodontia and cleft palate. Other indications include replacement of a failing or a poor-prognosis permanent tooth and surgical repositioning of an impacted or ectopic permanent tooth.

DB Orthodontics has developed a range of transplantation stents with The Leeds Dental Institute autologous transplantation team.



Kit includes 3 x stents - small, medium and large - plus stainless steel sterilisation cassette including locking arm (not shown).

- The set of stents have been produced to:
- Minimise extra-oral time of the donor tooth/teeth.
  - Reduce the damage to the periodontal ligament of donor tooth by minimising the number of try in attempts when assessing the donor tooth's fit in the recipient site.
  - Provide flexibility to the surgeon by providing a variety of stent sizes, thereby allowing them to choose the most appropriate premolar to transplant.





# Recommended washing, handling and sterilization instructions for Ixion™ Instruments

Instruments are not sterile upon receipt and must be sterilised before use in accordance with the following instructions.

Remove all packaging prior to cleaning and sterilization. Do not exceed 160°C.

For correct use and maximum and minimum wire sizes please refer to [www.ixion-instruments.co.uk](http://www.ixion-instruments.co.uk), current Ixion catalogue or the wire size etching on the instrument body.

## Cleaning Instructions

Remove any excess oil with a disposable paper towel.

### Manual

Brush using a near neutral cleaning agent (A neutral cleaning agent will prevent staining and mottling of the surface of the instrument) and ensure that the instrument is cleaned thoroughly on all surfaces and joints. Rinse under clean running water for 3 minutes. Repeat full process if necessary. Dry using a paper towel. Please Note: Manual cleaning is not recommended for IX841.

### Automatic

Use only validated washing agents suitable for the instruments and washing machine. (A neutral cleaning agent will prevent staining and mottling of the surface of the instrument).

When removing the instruments from the washing machines please check for cleanliness and repeat the cycle if necessary. Check for any damage or corrosion. Cutting edges should be free of defects and ensure that detachable tips are secure.

Dry thoroughly using a paper towel or dry heat not exceeding 160°C.

Please Note: Instruments should be thoroughly dried before sterilization, particular attention should be taken with drying joints/springs/tips and screws. Any residual water left on the instrument can lead to surface corrosion.

## Sterilisation Instructions

Always lubricate joints and hinges before sterilization, using a vapour permeable lubricant. (Ixion instrument oil IX010) Instruments should be loaded into perforated instrument trays or general purpose sterilisation trays ensuring the cutting edges are not in contact with the trays to avoid damaging the cutting surfaces. When sterilising more than one instrument care should be taken to prevent the instruments from touching as this may cause damage.

Use only validated vacuum autoclaves. Do not exceed 160°C. Do not exceed the manufacturers stated maximum load.

## Additional information

Validated ultrasonic baths may be used with validated cleaning agents. Follow instructions for use issued by the equipment and cleaning agent manufacturer.

DB Orthodontics recommends automatic cleaning requirements should be done following the requirements of CFPP, NI/CFPP, SHTM and WHTM publications as applicable. Ixion instruments washing and sterilization processes have been validated by DB Orthodontics and are in compliance with ISO 17665-1.

## Warranty

Ixion instruments are warranted to be free of defects in material and workmanship for 5 years. DB Orthodontics will sharpen free of charge within 1 year of purchase any cutter which fails to cut the intended wire size. Mis-use, abuse or failure to maintain or care for instruments properly will void warranty claims. DB Orthodontics's sole responsibility will be, at its own discretion, to repair or replace or credit the instrument in the event of any claimed defects. Adherence to recommended cleaning, sterilization and lubrication practices will help ensure optimum instrument performance. Cutting instruments that are used frequently should be reconditioned as required. Joints should be lubricated with a medical grade lubricant during every decontamination procedure. Warranty does not cover routine maintenance, sharpening or reconditioning.

## Limitation of Liability

Except where prohibited by law, DB Orthodontics will not be liable for any loss or damages arising from this product, whether direct, indirect, special, incidental or consequential, regardless of the theory asserted, including warranty, contract, negligence or strict liability. This limitation does not apply to third party personal injury claims.

Warranty does not cover routine maintenance, sharpening, repairing minor tip damage or reconditioning. Warranty claims or service requests should be forwarded to your distributor.

## Contact

DB Orthodontics Limited  
Ryefield Way, Silsden, West Yorkshire  
BD20 0EF United Kingdom  
Tel: +44 [0] 1535 656 999  
Fax: +44 [0] 1535 656 969  
email: [sales@dbortho.com](mailto:sales@dbortho.com)  
web: [www.ixion-instruments.com](http://www.ixion-instruments.com)

# Index

## Lingual Pliers

|        |                                                  |    |
|--------|--------------------------------------------------|----|
| IX950  | Weingart 60° Angle                               | 9  |
| IX951  | Weingart 60° Angle with T.C.                     | 9  |
| IX952  | Stepped Tweed Arch Plier                         | 9  |
| IX949  | Slim Tweed Arch Plier                            | 10 |
| IX953  | Cinch Back                                       | 10 |
| IX954  | Cinch Back - Large                               | 10 |
| IX955  | Bracket Removing Plier                           | 11 |
| IX960  | Anterior Debonding Plier                         | 11 |
| IX956  | Mini Ligature Cutter 50° Angle                   | 8  |
| IX956s | Micro Ligature Cutter 50° Angle                  | 12 |
| IX957  | Mini Ligature Cutter 60° Angle                   | 12 |
| IX957s | Micro Ligature Cutter 60° Angle                  | 12 |
| IX911  | Micro Ligature Cutter                            | 13 |
| IX911L | Micro Long Handled Ligature Cutter               | 13 |
| IX958  | Flush Cut Distal End Safety Hold Cutter Standard | 13 |
| IX958s | Flush Cut Distal End Safety Hold Cutter Small    | 13 |
| IX959  | Long Handled Distal End Cutter                   | 14 |
| IX940  | Curved Smaha                                     | 14 |
| IX632  | Lingual Bracket and Bondable Tube Placer         | 14 |
| IX941  | Curved Mosquito                                  | 15 |
| IX945  | Lingual Tucker                                   | 15 |

## Distal End Cutters

|        |                                      |    |
|--------|--------------------------------------|----|
| IX900  | Distal End Cutter                    | 17 |
| IX901  | Long Handled Distal End Cutter       | 17 |
| IX902  | Flush Cut Distal End Cutter Standard | 17 |
| IX902s | Flush Cut Distal End Cutter Small    | 17 |

## Hard Wire Cutters

|       |                                      |    |
|-------|--------------------------------------|----|
| IX905 | Hard Wire Cutter                     | 18 |
| IX915 | Hard Wire Cutter with T.C.           | 18 |
| IX906 | Hard Wire Cutter 15° Angle           | 18 |
| IX916 | Hard Wire Cutter 15° Angle with T.C. | 19 |
| IX908 | Heavy Duty Hard Wire Cutter          | 19 |

## Pin & Ligature Cutters

|        |                                    |    |
|--------|------------------------------------|----|
| IX910  | Pin Ligature Cutter 7° Angle       | 19 |
| IX911  | Micro Ligature Cutter              | 20 |
| IX911L | Micro Long Handled Ligature Cutter | 20 |
| IX912  | Standard Soft Wire Ligature Cutter | 20 |
| IX913  | Standard Soft Wire Ligature Cutter | 21 |

## Utility Pliers

|        |                                |    |
|--------|--------------------------------|----|
| IX800  | Small Weingart                 | 23 |
| IX801  | Small Weingart with T.C.       | 23 |
| IX802  | Large Weingart                 | 23 |
| IX803  | Large Weingart with T.C.       | 24 |
| IX804  | Fine Tipped Weingart           | 24 |
| IX843  | Utility Weingart with T.C.     | 24 |
| IX805  | How Utility Plier (Straight)   | 25 |
| IX806  | How Utility Plier (Angled)     | 25 |
| IX820  | Crimpable Archwire Hook Plier  | 25 |
| IX834  | Crimping Plier                 | 26 |
| IX825  | Posterior Band Remover (Short) | 26 |
| IX826  | Posterior Band Remover (Long)  | 26 |
| IX838  | Posterior Band Remover         | 27 |
| IX827  | Direct Bond Remover (Straight) | 27 |
| IX828  | Direct Bond Remover (Angled)   | 27 |
| IX829  | Direct Bond Remover            | 28 |
| IX835  | Adhesive Removing Plier        | 28 |
| IX840  | Small Adams Plier              | 28 |
| IX824  | Coon Ligature Tying Plier      | 29 |
| IX841  | Force Module Separator         | 29 |
| IX895S | Replacement Tips 3/16" (5mm)   | 29 |
| IX896S | Replacement Tips 1/8" (4mm)    | 29 |
| IX836  | Metal Pad                      | 29 |
| IX837  | Replacement Vinyl (150mm)      | 29 |

## Wire Bending Pliers

|       |                                        |    |
|-------|----------------------------------------|----|
| IX807 | Light Wire Plier                       | 31 |
| IX808 | Light Wire Plier with Cutter/2 Grooves | 31 |
| IX809 | Light Wire Plier with Cutter           | 31 |
| IX810 | Bird Beak Plier                        | 32 |
| IX872 | Bird Beak Plier                        | 32 |



## Wire Bending Pliers (Cont.)

|         |                                       |    |
|---------|---------------------------------------|----|
| IX812   | Tweed Loop Forming Plier with Cutter  | 32 |
| IX821   | Long Beak Light Wire Plier            | 33 |
| IX814   | O'Brien Loop Forming Plier            | 33 |
| IX815   | Nance Plier                           | 33 |
| IX813   | Tweed Arch Forming Plier              | 34 |
| IX871   | Tweed Arch Forming Plier              | 34 |
| IX949   | Slim Tweed Plier                      | 34 |
| IX817   | De La Rosa                            | 35 |
| IX819   | Small 3-Jaw Plier                     | 35 |
| IX816   | 3-Jaw Plier                           | 35 |
| IX823   | Fine 3-Jaw Ni Ti Plier                | 36 |
| IX823XF | Fine 3-Jaw Ni Ti Plier                | 36 |
| IX873   | Torquing Plier Set                    | 36 |
| IX811   | Light Wire Contouring & Cutting Plier | 37 |
| IX832   | V Bend Plier                          | 37 |
| IX830   | Hollow Chop                           | 37 |
| IX953   | Cinch Back                            | 38 |
| IX954   | Cinch Back - Large                    | 38 |
| IX975   | Intra Oral Detailing Plier .75mm      | 38 |
| IX976   | Intra Oral Detailing Plier .75mm      | 39 |

## Hand Instruments & Hemostats

|       |                                           |    |
|-------|-------------------------------------------|----|
| IX650 | Probe Single Ended                        | 41 |
| IX651 | Probe Double Ended                        | 41 |
| IX652 | Ligature Tucker                           | 41 |
| IX653 | Mitchell Trimmer                          | 41 |
| IX656 | Cement Spatula                            | 41 |
| IX657 | Flat Plastic                              | 41 |
| IX654 | Mirror Handle                             | 41 |
| IX655 | Mirror Heads pk 12                        | 41 |
| IX945 | Lingual Tucker                            | 42 |
| IX850 | Direct Bond Bracket Holder                | 42 |
| IX630 | Direct Bond Holder with Positioning Blade | 42 |
| IX631 | Deluxe Direct Bond Holder                 | 42 |
| IX632 | Lingual Bracket and Bondable Tube Placer  | 43 |
| IX633 | Curved Bracket Holder                     | 43 |
| IX845 | Mershon Band Pusher                       | 43 |
| IX846 | Mershon Band Pusher Small Round Handle    | 43 |
| IX861 | Mathieu Needle Holder                     | 44 |

## Hand Instruments & Hemostats (Cont)

|       |                                        |    |
|-------|----------------------------------------|----|
| IX862 | Mathieu Needle Holder (Standard)       | 44 |
| IX863 | Smaha (Straight)                       | 44 |
| IX864 | Curved Mathieu Needle Holder with T.C. | 45 |
| IX860 | Fine Tip Mathieu Needle Holder         | 45 |
| IX940 | Smaha (Curved)                         | 45 |
| IX841 | Curved Mosquito Forceps                | 46 |
| IX855 | Mosquito Forceps                       | 46 |

## Miscellaneous

|             |                                     |    |
|-------------|-------------------------------------|----|
| IX866       | Bracket Height Gauge 3.5mm-5mm .018 | 46 |
| IX867       | Bracket Height Gauge 3.5mm-5mm .022 | 46 |
| IX870       | Serrated Scissors                   | 47 |
|             | Instrument Code Rings               | 47 |
| IX101       | Small Rack                          | 49 |
| IX103       | Large Rack                          | 49 |
| IX102       | Medium Rack                         | 49 |
| DB04-0000/1 | Clear Upright Instrument Rack       | 49 |

## Laboratory Pliers

|       |                             |    |
|-------|-----------------------------|----|
| IX164 | Adams Plier                 | 51 |
| IX165 | Spring Former Plier         | 51 |
| IX700 | Universal General Use Plier | 51 |
| IX701 | Three Jaw Plier             | 52 |
| IX702 | Three Jaw Plier             | 52 |
| IX703 | Young Plier                 | 52 |
| IX704 | Swartz Plier                | 53 |
| IX705 | Lingual Arch Bending Plier  | 53 |
| IX706 | Flat Nose Plier             | 53 |
| IX707 | Conical Flat Nose Plier     | 54 |
| IX708 | Optical Plier               | 54 |
| IX710 | Flat Nose Plier             | 54 |
| IX711 | Heavy Duty Bird Beak        | 55 |
| IX712 | Heavy Duty Hard Wire Cutter | 55 |

## Tooth Autotransplantation

|       |           |    |
|-------|-----------|----|
| IX200 | Stent Kit | 56 |
|-------|-----------|----|

